

## **2" CONDUIT UNDER BRICK SIDEWALK**

### I. Quantity

The base bid shall include the indicated number of feet of 2" conduit under brick sidewalk located as shown on the drawings.

### II. Material

- a. Conduit - The non-metallic conduit shall be schedule 40 polyvinyl chloride. It shall be designed to form a sound, strong duct, free from defects. It shall be non-magnetic, resistant to corrosive action, unaffected by electrolysis and shall not soften, deform or deteriorate when exposed to the maximum safe operating temperature of cables. The inside surface of the conduit shall be smooth, and round and shall have a 2" nominal inside diameter. The conduit shall be Carlon heavy wall PV-duit plus conduit or approved equal.
- b. Couplings - The couplings shall be of the same material as the conduit, and shall be sufficiently tight to prevent silt or concrete from entering the conduit.
- c. Spacers - Plastic base type for 2" conduit.

### III. Installation DOE DWG 01S0097

- a. The conduit shall be installed as shown on the detailed drawings of conduit "under brick sidewalk." (DOE DWG. 01S0097)
- b. If the conduit is installed in an area to be paved under a separate item of this or another contract, backfill shall be appropriate for the paving indicated. No other surface restoration will be required.
- c. The trench shall be dug as indicated on the detailed drawings. The bottom of the trench shall be level and free of all stones and rocks. Excess material shall be disposed of by the contractor as specified in Section 203.05 of the City of Columbus construction and material specifications.

12/92  
MIS-89

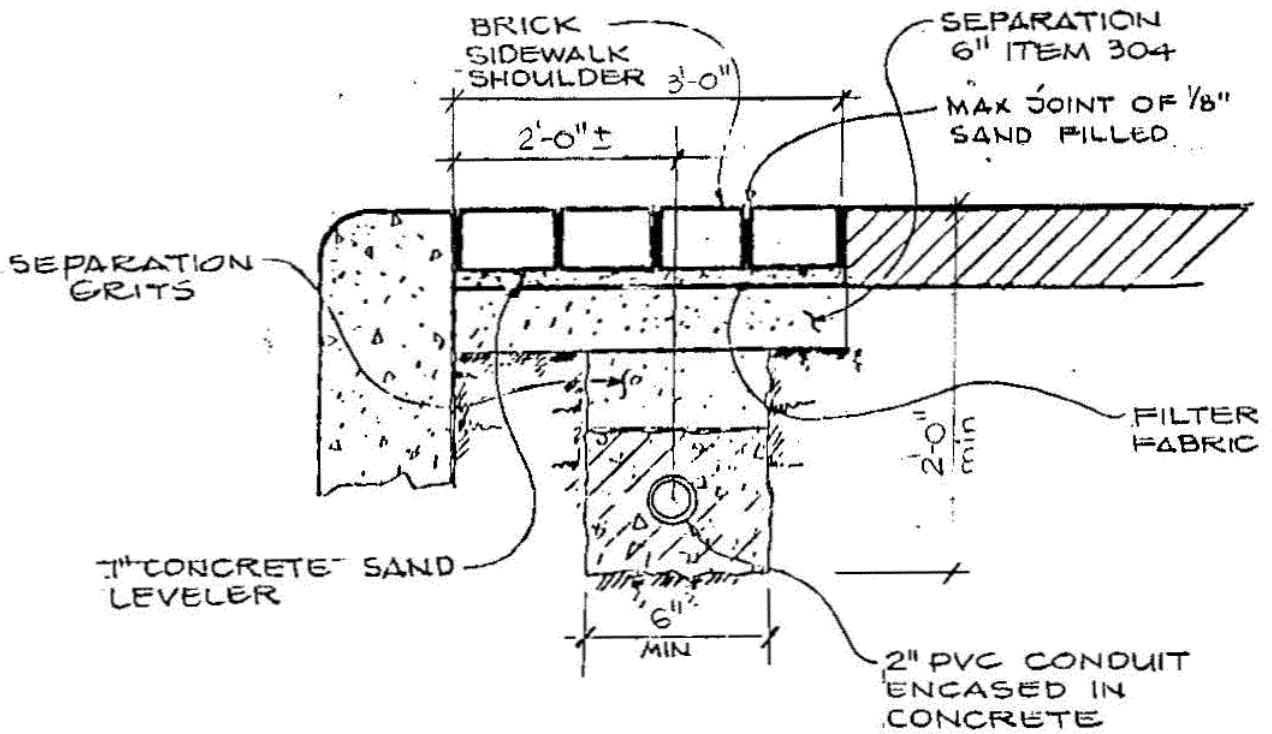
- d. The centerline of the conduit runs shall be 24" back of the house side face of the curb unless otherwise specified on the drawings or indicated by the

engineer.

- e. After the duct lines are installed, a flexible mandrel not less than 12" long, having a cross section approximately 1/4" less than the conduit shall be pulled through each conduit after which a stiff oversize wire brush shall be pulled through to make certain there are no particles left in the conduit.
- f. Three spacers shall be installed under each 10' section of conduit. One in the middle and one on each end of the section to insure total encasement of the conduit. If sand is used, the conduit shall be placed on a 2" cushion of sand.

IV. Quotation

The concrete encased 2" conduit under brick sidewalk hereinbefore specified shall be quoted for as a unit price per lineal foot in the appropriate place in document.



NOTES

1. CONCRETE ENCASEMENT 2" MIN ALL SIDES ITEM 499 CLASS C
2. ITEM NUMBER FROM THE CITY OF COLUMBUS CONSTRUCTION AND MATERIALS SPECIFICATIONS.

6/90 M.O. REVISIONS	<b>MELP</b> MUNICIPAL ELECTRIC LIGHT & POWER SYSTEM CITY OF COLUMBUS, OHIO DEPT. OF UTILITIES & AVIATION - DIV. OF ELECTRICITY		
	<b>CONDUIT UNDER BRICK SIDEWALK</b>		
	SCALE NONE	DRAWN M.O. 2/90	DRAWING NO. 015 0097
	C. U. NUMBER	APPROVED	SHEET 1 OF 1