

**3" RIGID STEEL CONDUIT JACKED, DRILLED,
OPEN CUT OR PUSHED UNDER PAVEMENT**

I. Quantity

The base bid shall include the indicated number of feet of 3" rigid steel conduit under pavement located as shown on the drawings.

II. Material

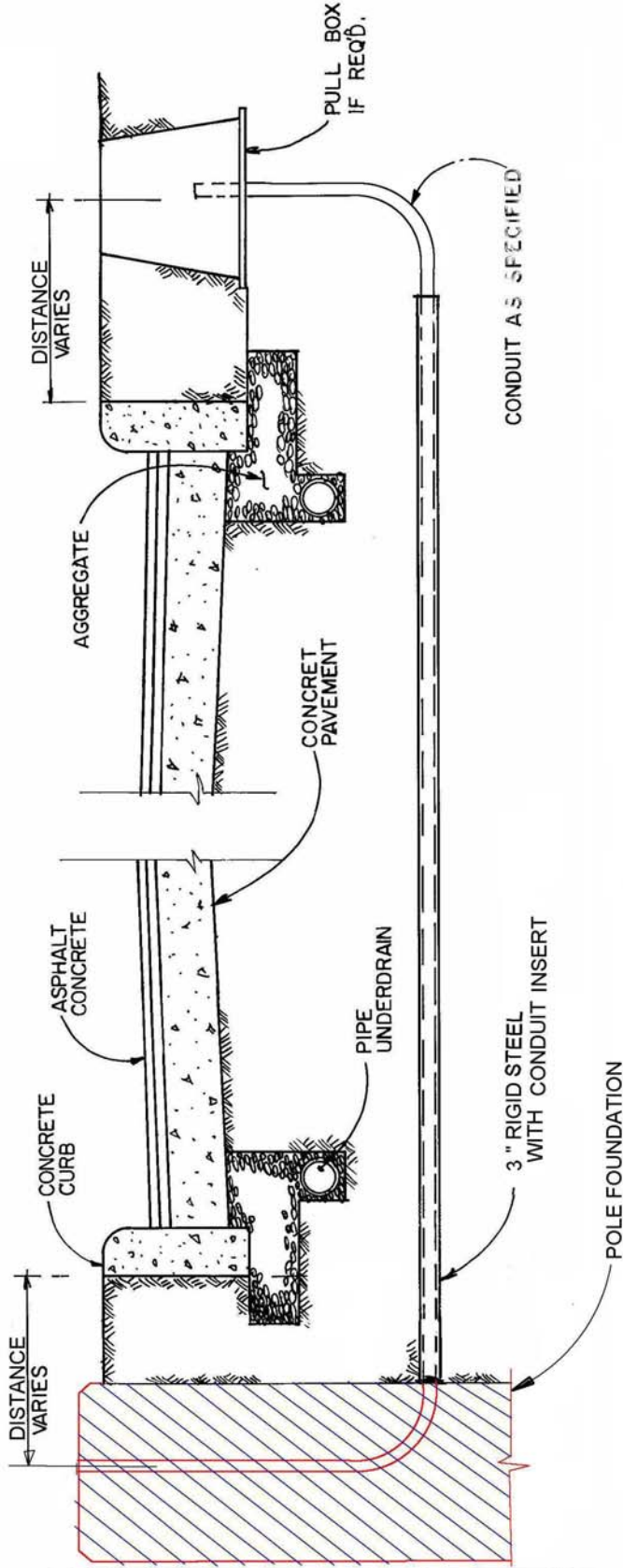
- a. Conduit Rigid - The 3" rigid steel conduit shall be hot dipped galvanized and secondary coated produced to ANSI Specifications C-80.1 and meet requirements of Underwriters Laboratories UL-6. Both ends shall be threaded. The conduit shall be Omega Tube & Conduit Corp. or approved equal.
- b. Conduit Non-Metallic - The 2" conduit shall be schedule 40 PVC type EPC-40-PVC and meet the requirements of NEMA Standards Publication TC-2-1983.
- c. Couplings - The couplings shall be the same material as the conduit.

III. Installation

- a. The contractor shall place the push pit with the least amount of disturbance to the existing pavement, berm pavement or shoulders of the roadway.
- b. The contractor shall exercise care not to damage the rigid conduit during installation. Damaged sections of conduit are not acceptable and shall be replaced with new conduit installed in the hole or be re-pushed. The conduit shall be extended a minimum of 3' beyond the pavement berm unless otherwise directed by the engineer.
- c. The 2" non-metallic conduit shall be carefully inserted through the full length of the 3" conduit and be continuous from pull box to pull box.
- d. The cost for jacking, drilling or pushing conduit under pavement shall be quoted in a per foot basis, form face to face of push pits, complete in place. Include in the unit price cost both rigid and non-metallic conduits, excavation for push pits, granular and other backfill materials, compaction, disposal of surplus materials and restoration of disturbed facilities and surfaces to equal or better condition that existed prior to the work.
- e. The 3" rigid conduit with 2" non-metallic insert shall be installed as shown on the detail drawings 01S0081B and 01S0085B.

IV. Quotation

The Conduit jacket under pavement herein specified shall be quoted on as a unit price per foot in the appropriate place of this document.



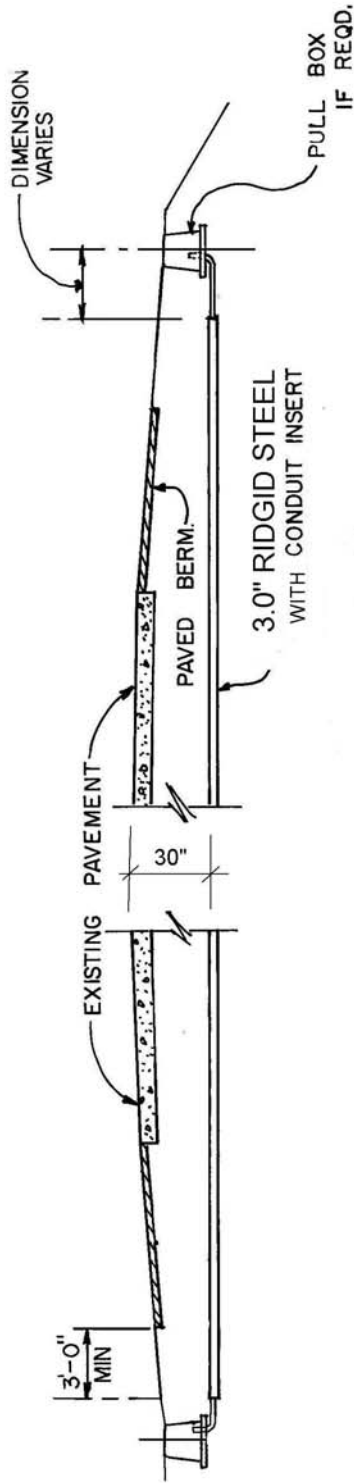
MEL&P MUNICIPAL ELECTRIC LIGHT & POWER SYSTEM
 CITY OF COLUMBUS, OHIO
 DEPT. OF PUBLIC SERVICE DIV. OF ELECTRICITY

**3.0" RIDGID STEEL CONDUIT
 UNDER PAVEMENT
 (CURBED)**

SCALE NONE PROJECT NO. APPROVED DRAWN MO 04/06 DRAWING NO. O I S 0081B SHEET 1 OF 1

| REVISIONS | |
|-----------|--|
| 05-09-05 | |
| 11-14-06 | |

1. CONDUIT TO PASS UNDER CURB DRAIN, EXACT ELEVATION MAY BE VARIED 130" MIN. - 48" MAX) TO AVOID THE UTILITIES WHICH EXIST IN STREET.
2. CONTRACTOR TO REPLACE, REPAIR AND REALIGN ANY CURB OR CURB DRAINS BROKEN, DISTURBED OR REMOVED DURING INSTALLATION CONDUIT.



MEL&P

MUNICIPAL ELECTRIC LIGHT & POWER SYSTEM
 CITY OF COLUMBUS, OHIO
 DEPT. OF PUBLIC SERVICE DIV. OF ELECTRICITY

**3.0" RIDGID STEEL UNDER PAVEMENT
 (UNCURBED)**

| REVISIONS | |
|-----------|--|
| 05-09-05 | |
| 11-14-06 | |

| | | |
|-------------|----------------|--------------|
| SCALE NONE | DRAWN OM 12/87 | DRAWING NO. |
| PROJECT NO. | APPROVED | OIS 0085B |
| | | SHEET 1 OF 1 |

